

# Mileposts on the Journey

## STRATEGIC PLAN FOR PARISHES AND SCHOOLS

Mission-mindedness • Leadership Development • Stewardship • Mission-mindedness • Leadership Development • Stewardship  
Mission-mindedness • Leadership Development • Stewardship • Mission-mindedness • Leadership Development • Stewardship  
Mission-mindedness • Leadership Development • Stewardship • Mission-mindedness • Leadership Development • Stewardship



*My Brothers and Sisters in the Lord,*

The entire Archdiocese of Detroit can be proud of *Together in Faith*, the unique and creative process we developed outlining priorities for the well-being and growth of our parishes and schools in the new millennium. The plan underscores three main goals: a commitment we call “mission-minded,” leadership development, and stewardship. Youth and young adult ministry will be our highest priority.

As we go forward, we must consider our new challenges and opportunities: Given population shifts, there are some areas of the Archdiocese in need of new parishes and schools, while in other areas, there is need for better sharing of resources and responding to shifting population.

The *Together in Faith* planning process put great emphasis on the local level—the parishes and their groupings as vicariates; from that local input, recommendations and timetables were formulated which respected the data regarding the number and age of available clergy, financial considerations and resources, as well as conditions of buildings and locations of schools.

Built into the process were phases of review by an objective committee representing various disciplines and having familiarity with planning and the specific needs and gifts of all parts of the metro area.

The Holy Spirit has truly been at work in the voices of literally thousands of people who have given of their time and insight to help shape the future of our Church. This special report presents *Mileposts on the Journey*—past, present, and future—to guide us in strengthening and giving new vibrancy to our parishes and schools. Thanks to all—clergy, religious, and laypeople—who have been part of this great endeavor and praise to the Lord, who has inspired and sustained us!

*Sincerely in the Lord,*

*+ Adam Cardinal Maida*

ADAM CARDINAL MAIDA



SPRING 2006

Birmingham-Bloomfield-Troy Vicariate • Blue Water Vicariate • Central Macomb Vicariate • Downriver Vicariate • Farmington-Southfield Vicariate • Genesis Vicariate • Lakes Vicariate • North Macomb Vicariate • Northwest Wayne Vicariate • Pontiac Area Vicariate • Renaissance Vicariate • Southeast Oakland Vicariate • Southwest Vicariate • SERF Vicariate • Thumb Vicariate • Trinity Vicariate • West Wayne Vicariate  
Birmingham-Bloomfield-Troy Vicariate • Blue Water Vicariate • Central Macomb Vicariate • Downriver Vicariate • Farmington-Southfield Vicariate • Genesis Vicariate • Lakes Vicariate • Monroe Vicariate • North Macomb Vicariate • Northwest Wayne Vicariate • Pontiac Area Vicariate • Renaissance Vicariate • Southeast Oakland Vicariate • Southwest Vicariate • SERF Vicariate • Thumb Vicariate • Trinity Vicariate • West Wayne Vicariate

## How the Archdiocese is organized

There are 18 geographical groupings of parishes, known as vicariates, in the Archdiocese of Detroit. For purposes of pastoral support and guidance from the auxiliary bishops, the vicariates are organized into four regions.

**Central Region**—Bishop John Quinn, regional bishop. Vicariates: Renaissance, Trinity, Southwest.

**Northeast Region**—Bishop Earl Boyea, regional bishop. Vicariates: Blue Water, Central Macomb, Genesis, North Macomb, SERF.

**Northwest Region**—Msgr. John Zenz, episcopal vicar. Vicariates: Birmingham-Bloomfield-Troy, Farmington-Southfield, Lakes, Pontiac Area, Southeast Oakland, Thumb.

**South Region**—Bishop Francis Reiss, regional bishop. Vicariates: Downriver, Monroe, Northwest Wayne, West Wayne.



## Index

Timeline .....	3	Parish projection .....	9
Key words .....	3	Parish list .....	10
Priest statistics .....	4	School projection .....	12
Our priests .....	5	School list .....	13
Criteria .....	6	Themes .....	14
Guiding principles .....	7	Priorities .....	15
Vicariate map .....	8	Journey Prayer .....	16

## NOTE



All excerpts in this report are taken from Cardinal Adam Maida's Pastoral Letter, *The Journey Before Us*.

The full version is available in the March 31 issue of *The Michigan Catholic* and on the Archdiocese of Detroit Web site at [www.AODonline.org](http://www.AODonline.org).

## Credits

The Archdiocesan Departments of Education and Parish Life and Services shared lead responsibility for the *Together in Faith* process and contributed to this special report.

*Mileposts on the Journey* was edited by Marylynn G. Hewitt, SFO, with support from Ned McGrath and the Department of Communications. Graphics by Jason G. Pelc.

Photos in this report by Shawn D. Ellis, Larry Peplin, Greg Shamus, Robert Delaney, and Kristin Lukowski.

## Timeline of mileposts

### 1994

Vicariate Pastoral Planning concept introduced.

### 1997-98

Vicariate Pastoral Councils (VPC) established; planning begins to engage and energize vicariate structures.

### 2003

Priests request Archdiocesan strategic plan for parishes and schools.

### 2004 (Fall)

Building on Vicariate Pastoral Planning, *Together in Faith* launched. Coordinating Committee established.

### 2004 (Fall)-2005 (Winter)

Planning process introduced; sacramental, financial, and demographic data considered by parishes and schools; self-studies commence.

### 2005 (Spring)

Parish and school planning documents shared with VPCs for review and recommendations.

### 2005 (Summer)

VPCs submit their plans to Coordinating Committee.

### 2005 (Fall)-2006 (Winter)

Regional bishops review documents; dialogues commence between VPCs and Coordinating Committee, including three rounds of follow-up questions and responses; recommendations finalized and forwarded to Cardinal Maida.

### 2006 (Spring)

Cardinal Maida promulgates the *Together in Faith* Strategic Plan.

### 2006 (Spring, Summer)-and Beyond

Tracking Committee established. Implementation of priorities begins: mission-mindedness, leadership development, and stewardship. Youth and young adult ministry is highest priority.

## Key words

**Archdiocesan Pastoral Council (APC):** A group of laypeople, along with priests and religious, that serve as a consultative body to Cardinal Maida. It advises and assists him toward fulfilling his pastoral duties.

**Central Services:** The Archdiocesan Departments and Offices. Taken together, these administrative departments and offices touch virtually every facet of Church life and concern. Most of their work is funded by the annual Catholic Services Appeal (CSA).

**Close:** Generally, this term refers to the closing of a church building. In canon law, when a parish is "closed," this is called **suppression**.

**Cluster:** A group of two or more parishes that share a priest as its pastor; however, the priest may live at another location and serve as pastor of more than one community. The communities each have a parish pastoral council, and may or may not have geographical boundaries. Each has separate budgets and staff.

**Coordinating Committee:** A group of priests, religious, and laypeople responsible for reviewing the *Together in Faith* plans submitted by the vicariates and for bringing the final recommendations to Cardinal Maida.

**Council of Vicars:** A group of priests assigned to coordinate pastoral activity in the 18 geographical groupings of parishes known as **vicariates**. A **vicar** is recommended by the Vicariate Pastoral Council (VPC) and is appointed by Cardinal Maida.

**Merger:** A merger is the bringing together of two or more parishes to form one entity at one site (or with perhaps additional locations for outreach centers and/or chapels for special/occasional purposes).

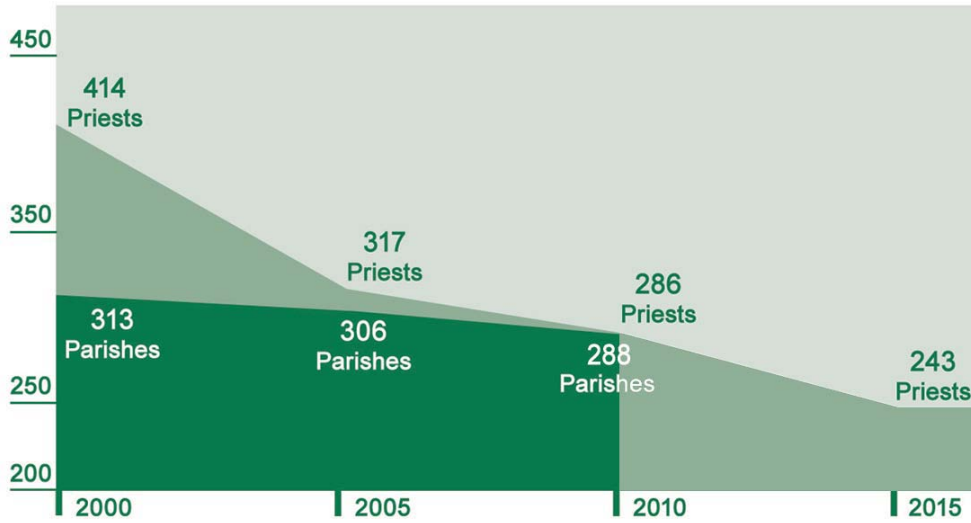
**Presbyteral Council:** A consultative body, composed of priests, assisting Cardinal Maida in his exercise of governmental authority.

**Tracking Committee:** A group of priests, religious, and laypeople who will participate in and monitor the work of implementing the *Together in Faith* plan, along with reviewing and considering the *Total Pastoral Plan for Priests*.

**Vicariate Pastoral Council (VPC):** A group composed of priests, religious, and laypeople selected to represent their parish in the pastoral planning for their vicariate along with neighboring parishes. Resources are identified and shared for the faithful within the geographical boundary of their vicariate. Priorities include, but are not limited to, Christian service, evangelization, schools, stewardship, vocations, and youth and young adult ministry.



## Archdiocesan Priests: By the Numbers



### Priests and Parishes

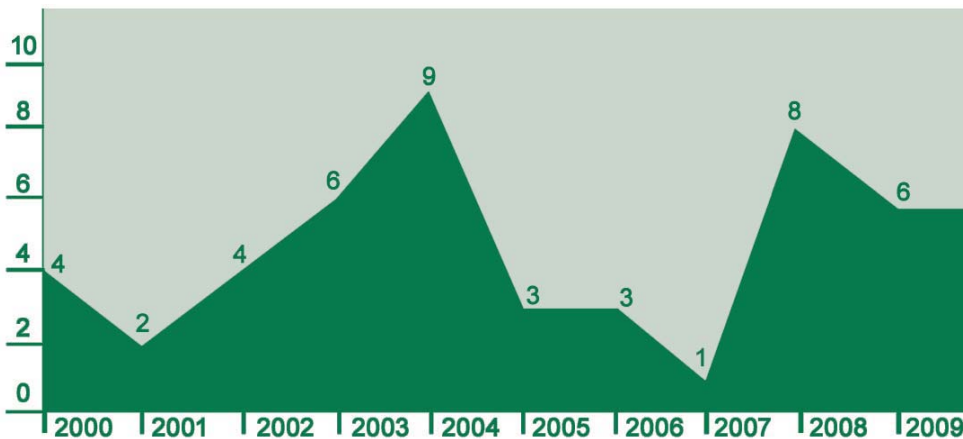
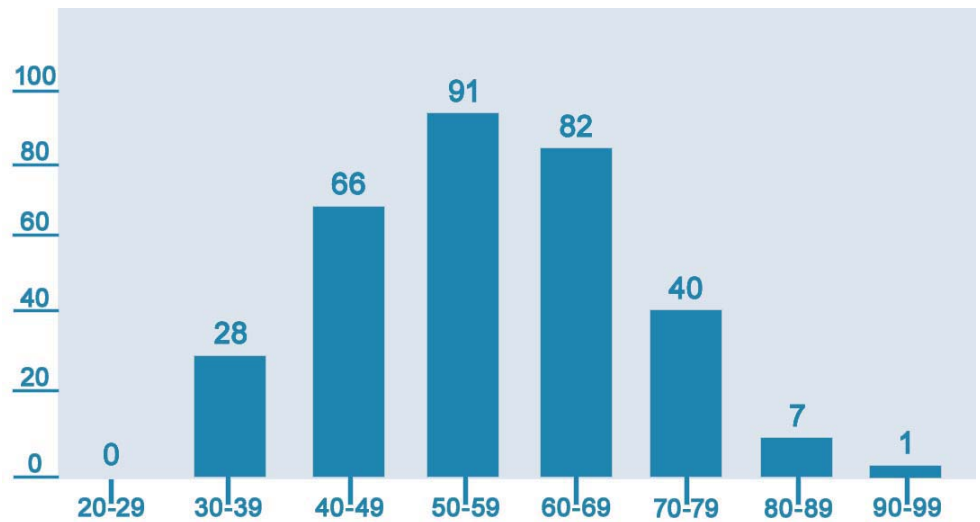
Source: Department of Parish Life and Services

Note: This graph charts the number of active/available priests (serving as pastors, associates or as administrators) with the current and projected number of parishes. It illustrates the challenge of having priest-pastors in every parish. In the near future, the graph shows, the number of parishes will surpass the number of active/available priests.

### Ages of Priests in Parishes

Source: Department of Parish Life and Services

Note: This graph shows a majority of our priests in parishes are between the ages of 50 and 69. A total of 48 priests are serving in parishes beyond their retirement age. Health issues can impact this number at any time, which, in turn, will modify the number of active/available parish priests.



### Priest Ordinations

Source: Sacred Heart Major Seminary

Note: This graph shows the number of priests ordained since 2000, as well as ordinations projected for the near future. At the present time, there are 18 men enrolled in the Seminary's four-year program that precedes ordination. This information should be assessed in conjunction with the top chart illustrating the ratio of priests to parishes.

---

## PRIESTS

“A related concern has been the health and well-being of our priests, especially as they have been shouldering ever more demanding challenges of contemporary pastoral service, often to more than one parish community and sometimes in circumstances requiring sensitivity to bilingual, ethnic and racially diverse needs. Thanks to the creative efforts of many priests and other advisors, the

Presbyteral Council developed a *Total Pastoral Plan for Priests*. As we go forward, the review and consideration of this later plan, along with the implementation of *Together in Faith*, will be monitored in an ongoing fashion by a newly appointed Archdiocesan Tracking Committee.”

— From *The Journey Before Us*




---

## NOURISHMENT

“In the fall of 2004, when we began the *Together in Faith* process, our Scriptural reference point was Luke 24, the story of the two disciples with Jesus on the road to Emmaus. As they journeyed along, Jesus shared their questions and struggles; in the same way, He has been with us as we have discussed the future of our Church. Once the two disciples recognized

Jesus in the breaking of the bread, they returned to Jerusalem and shared with the other disciples what they had come to understand on the road. At the same time, the Jerusalem community related with joy their own encounter with the Risen Lord. A mutual sharing of good news—such is the life of the Church in every time and place.

Here in the Archdiocese of Detroit,

we now find ourselves at a similar moment. Having reflected on our past and present reality, we have recognized our gifts and challenges, limitations and potential. Through our dialogue in parishes, schools, and vicariates, we have come to appreciate that our Church needs new ways of providing and sharing our ministries.”

— From *The Journey Before Us*

---

---

## CRITERIA

“During the *Together in Faith* process, our basic references have been the sacred Scriptures, Church teachings and discipline, as well as our lived experience in communities of faith. While we can never measure or quantify the mystery of the Holy Spirit, nonetheless, since the Church is human as well as spiritual, our discernment needs to include objective data.”

— From *The Journey Before Us*



## Guiding principles of the planning process

The recommendations made by the *Together in Faith* Coordinating Committee were based upon the following principles:

1. Due to shifting populations, declining membership, and limited resources, some pastors who retire, become ill, or are reassigned, may not be replaced.
2. Since the Cluster Guidelines were adopted in 2000, many parishes have clustered. In most cases, experience has shown that clustering should be a first step toward merging parish communities.
3. In parishes where religious orders of men are assigned, their presence in the Archdiocese centers on the mission of each order and their availability to continue to serve. Facing the possibility that religious orders may need to withdraw from the Archdiocese, their parishes were also asked to identify cluster partners.
4. In cluster or merger situations, canonically, there must be a priest-pastor. It is possible for a deacon to be assigned to the pastor to assist in the pastoral ministry necessary for the new cluster or merger situation.
5. Demographics indicate that Catholic schools are serving students from areas that extend beyond the local parish. Vicariates/regions need to address the responsibility of financial support of schools within the vicariate/region.
6. Each parish needs to review the status of its outstanding debts to determine if the frequency of payments and/or the amount of the payments being made are sufficient to pay off its debts in a reasonable period of time.



## Coordinating Committee

The Coordinating Committee has been responsible for reviewing the *Together in Faith* plans submitted by the vicariates and for bringing the final recommendations to Cardinal Maida.

### Key aspects considered were:

- **Sacramental:** How a parish plans to meet the sacramental needs of its worshipping community.
- **Strategic:** How a parish's function and location fit with strategic goals of the Church.
- **Sustainable:** How sustainable a parish's pastoral plan is for the future.

### Members of the committee:

**Bishop Francis Reiss**, auxiliary/regional bishop, Cardinal Maida's delegate;

**Edward J. (Chip) Miller**, committee chairman, investment consultant, St. Paul Parish, Grosse Pointe Farms;

**Msgr. Ricardo Bass**, canon lawyer and pastor of Prince of Peace Parish, West Bloomfield Twp.;

**Sr. Maureen Fay, OP**, former president of the University of Detroit Mercy, St. Gerard Parish, Detroit;

**Msgr. Dennis Harrity**, senior (retired) priest of the Archdiocese of Detroit;

**Emmett Moten**, real estate developer, business owner, Gesu Parish, Detroit;

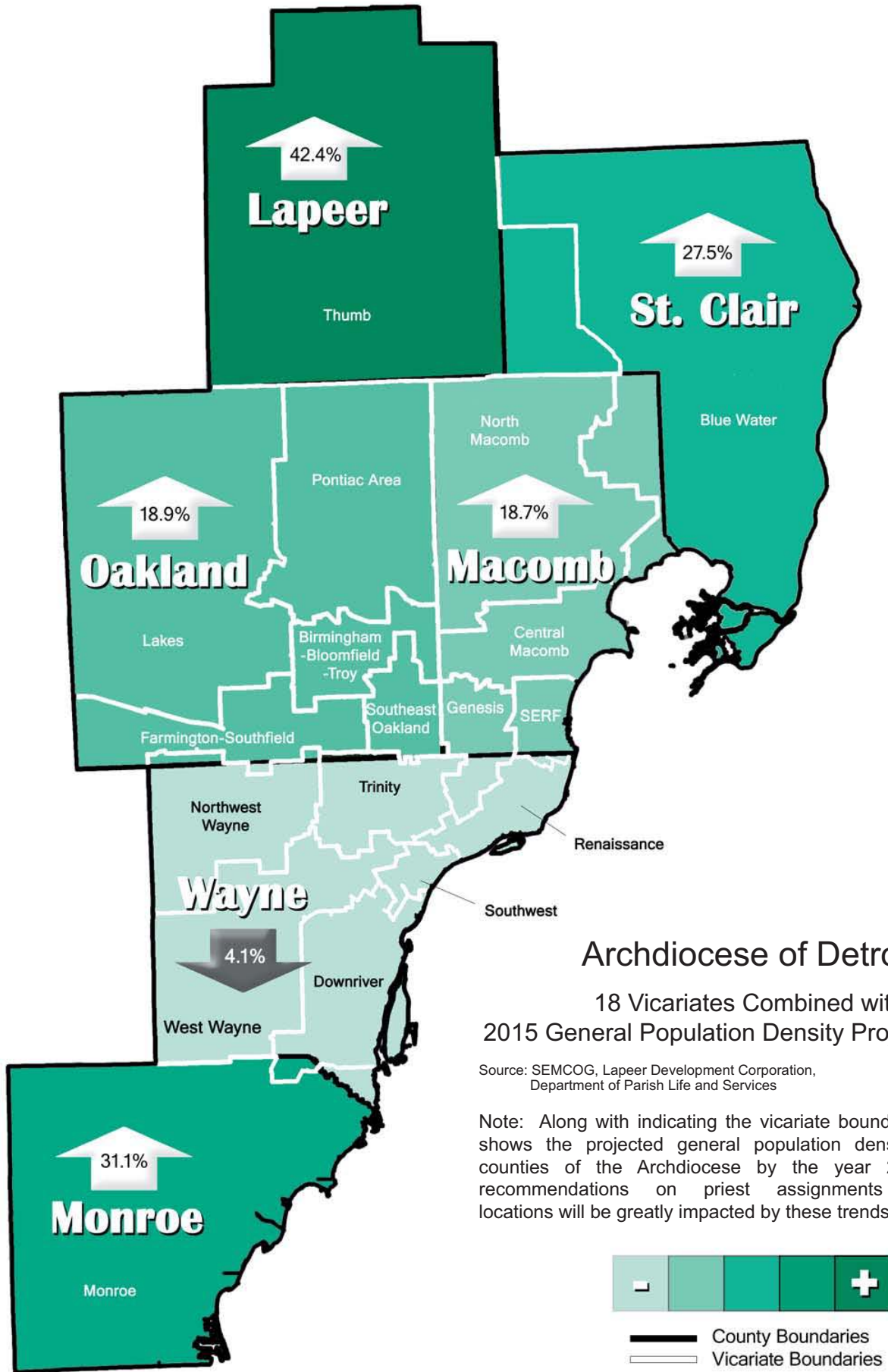
**Nettie Seabrooks**, chief operating officer of the Detroit Institute of Arts, SS. Peter and Paul (Jesuit) Parish, Detroit;

**Dr. William Starbird**, family physician, SS. Peter and Paul Parish, North Branch;

**James Suhay Jr.**, adjunct lecturer at Oakland University, Holy Name Parish, Birmingham;

**Fr. Stanley Ulman**, pastor of St. Mary of the Hills, Rochester Hills; and

**Adriana Vlastic**, attorney, former advisor to the U.S. Conference of Catholic Bishops, Our Lady of Refuge Parish, Orchard Lake.



## Archdiocesan Parish Projection

Of the 306 parishes in the Archdiocese of Detroit, there are currently:

- 27 clusters
- involving 61 parishes
- in 13 vicariates

### In June 2006

The following parishes will cluster, close or merge:

#### Northwest Wayne Vicariate

- St. Genevieve and St. Maurice, both in Livonia, will cluster

#### Renaissance Vicariate

- Annunciation/Our Lady of Sorrows and St. Anthony, both in Detroit, will merge
- St. Brendan, Detroit, will close
- Guardian Angels, Detroit, will close

#### Trinity Vicariate

- Immaculate Heart of Mary and St. Gerard, both in Detroit, will merge
- Martyrs of Uganda, Detroit, will close

### In 2007

The following parishes will, merge or close:

#### Central Macomb Vicariate

- St. Claude and St. Thecla, both in Clinton Twp., will merge
- St. Louis and St. Valerie, both in Clinton Twp., will merge

#### Farmington–Southfield Vicariate

- St. Beatrice, St. Bede, St. Ives, and St. Michael, all in Southfield, will merge

#### Southwest Vicariate

- St. John Cantius, Detroit, will merge or close

### By December 2006

The recommendations call for some of the parishes in the vicariates listed below to submit cluster plans and begin planning for implementation upon the retirement, reassignment, or illness of the current pastor. Parishes that are a part of this plan are designated on Pages 10 and 11 with an “\*” next to their name.

- Downriver Vicariate  
24 of 26 parishes
- Genesis Vicariate  
14 of 21 parishes
- Northwest Wayne Vicariate  
4 of 22 parishes
- SERF Vicariate  
8 of 18 parishes
- West Wayne Vicariate  
13 of 23 parishes

All parishes in the Trinity Vicariate and Renaissance Vicariate will evaluate their current clusters and submit plans for clustering, merging, or closing parishes, to be implemented upon the retirement, reassignment, or illness of the current pastor. • The Birmingham-Bloomfield-Troy Vicariate and the Southeast Oakland Vicariate will submit a plan for increased collaboration.

### Future plans

- 1.) The recommendations call for the following parishes to make plans to cluster, merge, or close in the event of the retirement, reassignment, or illness of the priest.

#### Birmingham-Bloomfield-Troy Vicariate

- St. Alan, Troy, and St. Columban, Birmingham, will cluster

#### Northwest Wayne Vicariate

- St. Bernardine of Siena, Westland, will merge or close
- St. John Bosco, Redford Twp., will merge or close

#### Renaissance Vicariate

- Our Lady Queen of Peace and St. Peter the Apostle, both in Harper Woods, will cluster

#### Southwest Detroit

- St. Andrew, Detroit, will merge or close
- St. Anthony (Lithuanian), Detroit, will merge or close
- Our Lady of Mt. Carmel, Detroit, will merge or close

- 2.) The recommendations call for a realignment of parishes.

#### Blue Water Vicariate

- Clusterd parishes to submit plans; one parish to close

#### Genesis Vicariate

- St. Ladislaus, Hamtramck, will merge

- 3.) The recommendations address areas of increasing Catholic population.

#### Lakes Vicariate and North Macomb Vicariate

- Will continue to study the need for new church buildings

Key:  Closing  Merging  
 Clustering

## Archdiocesan Parishes

Parish	City	Vicariate
All Saints	Detroit	Southwest
All Saints	Memphis	Blue Water
<b>Annunciation/Our Lady of Sorrows</b>	<b>Detroit</b>	<b>Renaissance</b>
Ascension *	Warren	Genesis
Assumption Grotto	Detroit	Renaissance
Blessed Sacrament Cathedral	Detroit	Trinity
Christ the Good Shepherd *	Lincoln Park	Downriver
Christ the King	Detroit	Trinity
Christ the Redeemer	Lake Orion	Pontiac Area
Church of the Madonna	Detroit	Trinity
Divine Child	Dearborn	West Wayne
Divine Providence (Lithuanian)	Southfield	Farmington-Southfield
Divine Savior *	Westland	Northwest Wayne
Gesu	Detroit	Trinity
Guardian Angels	Clawson	Southeast Oakland
<b>Guardian Angels</b>	<b>Detroit</b>	<b>Renaissance</b>
Holy Cross (Hungarian)	Detroit	Southwest
Holy Cross	Marine City	Blue Water
Holy Family (Italian)	Detroit	Renaissance
Holy Family	Inkster	West Wayne
Holy Family	Novi	Farmington-Southfield
Holy Innocents *	Roseville	SERF
Holy Name	Birmingham	Birmingham-Bloomfield-Troy
Holy Redeemer	Detroit	Southwest
Holy Rosary Mission	Smiths Creek	Blue Water
Holy Spirit	Highland Twp.	Lakes
Immaculate Conception	Anchorville	Blue Water
Immaculate Conception	Lapeer	Thumb
<b>Immaculate Heart of Mary</b>	<b>Detroit</b>	<b>Trinity</b>
<b>Martyrs of Uganda</b>	<b>Detroit</b>	<b>Trinity</b>
Most Holy Trinity	Detroit	Southwest
National Shrine of the Little Flower	Royal Oak	Southeast Oakland
Nativity of Our Lord	Detroit	Renaissance
Our Lady Help of Christians *	Detroit	Genesis
Our Lady of Albanians	Beverly Hills	Farmington-Southfield
Our Lady of Czestochowa	Sterling Heights	Central Macomb
Our Lady of Fatima	Oak Park	Southeast Oakland
Our Lady of Good Counsel *	Detroit	Genesis
Our Lady of Good Counsel	Plymouth	Northwest Wayne
Our Lady of Grace	Dearborn Heights	Trinity
Our Lady of Grace (Vietnamese)*	Eastpointe	SERF
Our Lady of Guadalupe Mission	Port Huron	Blue Water
Our Lady of La Salette	Berkley	Southeast Oakland
Our Lady of Loretto	Redford Twp.	Northwest Wayne
Our Lady of Lourdes *	River Rouge	Downriver
Our Lady of Mt. Carmel **	Detroit	Southwest
Our Lady of Mt. Carmel	Emmett	Blue Water
Our Lady of Mt. Carmel	Temperance	Monroe
Our Lady of Mt. Carmel *	Wyandotte	Downriver
Our Lady of Refuge	Orchard Lake	Lakes
Our Lady of Sorrows	Farmington	Farmington-Southfield
Our Lady of the Lakes	Waterford Twp.	Lakes
Our Lady of the Rosary	Detroit	Renaissance
Our Lady of the Woods *	Woodhaven	Downriver
Our Lady of Victory	Northville	Northwest Wayne
Our Lady Queen of All Saints	Fraser	SERF
Our Lady Queen of Angels	Detroit	Southwest
Our Lady Queen of Apostles *	Hamtramck	Genesis
Our Lady Queen of Heaven *	Detroit	Genesis
Our Lady Queen of Martyrs	Beverly Hills	Birmingham-Bloomfield-Troy
Our Lady Queen of Peace	Harper Woods	Renaissance
Our Lady Star of the Sea	Grosse Pte. Wds.	Renaissance
Presentation/Our Lady of Victory	Detroit	Trinity
Prince of Peace	W. Bloomfield Twp.	Lakes
Resurrection	Canton Twp.	Northwest Wayne
Sacred Heart	Auburn Hills	Pontiac Area
Sacred Heart	Dearborn	West Wayne
Sacred Heart	Detroit	Renaissance
Sacred Heart *	Grosse Ile	Downriver
Sacred Heart	Imlay City	Thumb
Sacred Heart	Roseville	SERF
Sacred Heart	Yale	Blue Water
Sacred Heart Mission	Brown City	Thumb
San Francesco (Italian)	Clinton Twp.	Central Macomb
SS. Andrew & Benedict	Detroit	Southwest
SS. Cyril & Methodius (Slovakian)	Sterling Heights	Central Macomb
SS. John and Paul	Washington Twp.	North Macomb

Parish	City	Vicariate
SS. Peter and Paul	North Branch	Thumb
SS. Peter and Paul (Jesuit)	Detroit	Renaissance
SS. Peter and Paul (Westside)	Detroit	Trinity
SS. Simon & Jude *	Westland	West Wayne
St. Aidan	Livonia	Northwest Wayne
St. Alan	Troy	Birmingham-Bloomfield-Troy
St. Albert the Great *	Dearborn Heights	West Wayne
St. Alexander	Farmington Hills	Farmington-Southfield
St. Alfred *	Taylor	Downriver
St. Aloysius	Detroit	Renaissance
St. Aloysius	Romulus	West Wayne
St. Alphonsus *	Dearborn	West Wayne
St. Ambrose	Grosse Pte. Park	Renaissance
St. Anastasia	Troy	Birmingham-Bloomfield-Troy
St. Andrew **	Detroit	Southwest
St. Andrew	Rochester	Pontiac Area
St. Andrew Kim (Korean)	Farmington Hills	Farmington-Southfield
St. Angela	Roseville	SERF
St. Anne	Detroit	Southwest
St. Anne	Monroe	Monroe
St. Anne	Ortonville	Lakes
St. Anne	Warren	Genesis
St. Anselm	Dearborn Heights	West Wayne
St. Anthony	Belleville	West Wayne
<b>St. Anthony</b>	<b>Detroit</b>	<b>Renaissance</b>
St. Anthony	Temperance	Monroe
St. Anthony (Lithuanian) **	Detroit	Southwest
St. Athanasius *	Roseville	SERF
St. Augustine	Richmond	Blue Water
St. Augustine/St. Monica	Detroit	Renaissance
St. Barbara *	Dearborn	West Wayne
St. Barnabas *	Eastpointe	SERF
St. Bartholomew	Detroit	Trinity
St. Basil *	Eastpointe	SERF
<b>St. Beatrice</b>	<b>Southfield</b>	<b>Farmington-Southfield</b>
<b>St. Bede</b>	<b>Southfield</b>	<b>Farmington-Southfield</b>
St. Benedict	Highland Park	Trinity
St. Benedict	Waterford Twp.	Pontiac Area
St. Bernardine of Siena **	Westland	Northwest Wayne
St. Blase	Sterling Heights	Central Macomb
<b>St. Brendan</b>	<b>Detroit</b>	<b>Renaissance</b>
St. Catherine	Algonac	Blue Water
St. Catherine of Siena	Detroit	Trinity
St. Cecilia	Detroit	Trinity
St. Charles Borromeo	Detroit	Renaissance
St. Charles Borromeo	Newport	Monroe
St. Christopher	Detroit	Trinity
St. Christopher	Marysville	Blue Water
St. Clare of Montefalco	Grosse Pte. Park	Renaissance
St. Clare of Assisi	Farmington Hills	Farmington-Southfield
<b>St. Claude</b>	<b>Clinton Twp.</b>	<b>Central Macomb</b>
St. Clement	Center Line	Genesis
St. Clement *	Dearborn	West Wayne
St. Clement of Rome	Romeo	North Macomb
St. Cletus *	Warren	Genesis
St. Colette	Livonia	Northwest Wayne
St. Colman	Farmington Hills	Farmington-Southfield
St. Columban	Birmingham	Southeast Oakland
St. Conrad	Melvindale	Downriver
St. Constance *	Taylor	Downriver
St. Cornelius	Dryden	Thumb
St. Cunegunda *	Detroit	West Wayne
St. Cyprian *	Riverview	Downriver
St. Cyril of Jerusalem *	Taylor	Downriver
St. Damian *	Westland	Northwest Wayne
St. Daniel	Clarkston	Lakes
St. Dennis	Royal Oak	Southeast Oakland
St. Donald *	Roseville	SERF
St. Dorothy *	Warren	Genesis
St. Dunstan *	Garden City	West Wayne
St. Edith	Livonia	Northwest Wayne
St. Edmund	Warren	Genesis
St. Edward on the Lake	Lakeport	Blue Water
St. Elizabeth	Detroit	Renaissance
St. Elizabeth *	Wyandotte	Downriver
St. Elizabeth Ann Seton	Troy	Birmingham-Bloomfield-Troy
St. Ephrem	Sterling Heights	Central Macomb
St. Fabian	Farmington Hills	Farmington-Southfield
St. Florian *	Hamtramck	Genesis

## Archdiocesan Parishes

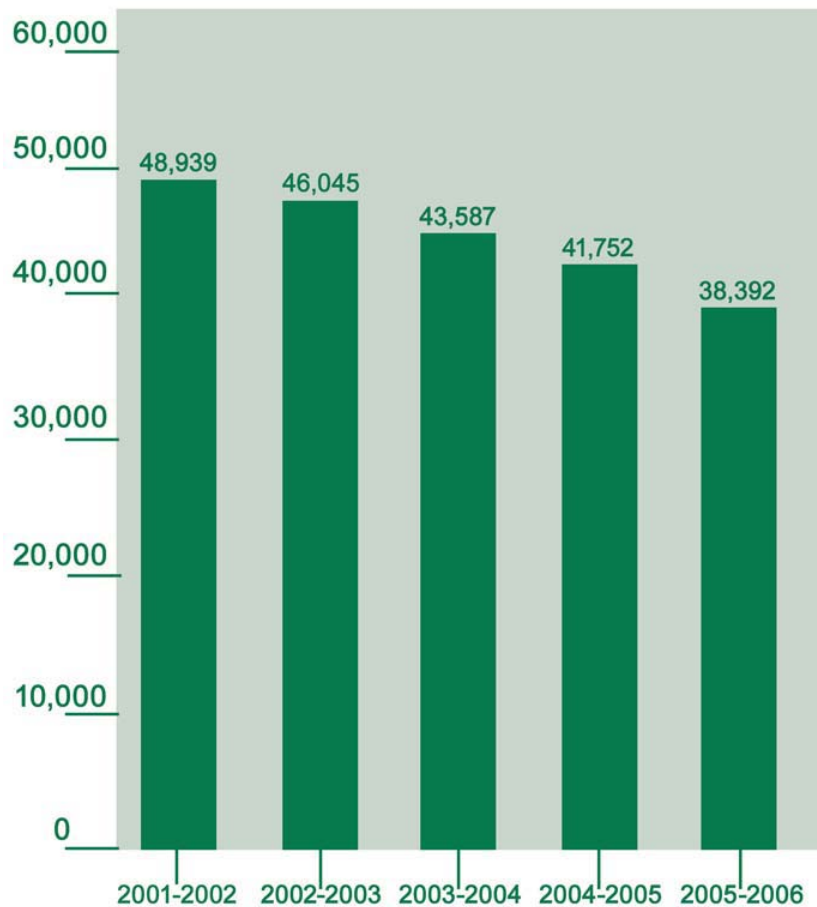
Parish	City	Vicariate
St. Frances Cabrini *	Allen Park	Downriver
St. Francis d'Assisi	Detroit	Southwest
St. Francis of Assisi	Ray	North Macomb
St. Francis Xavier *	Ecorse	Downriver
St. Gabriel	Detroit	Southwest
<b>St. Genevieve</b>	<b>Livonia</b>	<b>Northwest Wayne</b>
St. Gerald	Farmington	Farmington-Southfield
<b>St. Gerard</b>	<b>Detroit</b>	<b>Trinity</b>
St. Germaine *	St. Clair Shores	SERF
St. Gertrude	St. Clair Shores	SERF
St. Gregory the Great	Detroit	Trinity
St. Hedwig	Detroit	Southwest
St. Helena *	Wyandotte	Downriver
St. Henry *	Lincoln Park	Downriver
St. Hilary	Redford Twp.	Trinity
St. Hubert	Harrison Twp.	Central Macomb
St. Hugh *	Southgate	Downriver
St. Hugo of the Hills	Bloomfield Hills	Birmingham-Bloomfield-Troy
St. Hyacinth	Detroit	Renaissance
St. Irenaeus	Rochester Hills	Pontiac Area
St. Irene	Dundee	Monroe
St. Isaac Jogues	St. Clair Shores	SERF
St. Isidore	Macomb	North Macomb
<b>St. Ives</b>	<b>Southfield</b>	<b>Farmington-Southfield</b>
St. James	Ferndale	Southeast Oakland
St. James	Novi	Farmington-Southfield
St. Jane Frances de Chantal	Sterling Heights	Central Macomb
St. Joan of Arc	St. Clair Shores	SERF
St. John Bosco **	Redford Twp.	Northwest Wayne
St. John Cantius **	Detroit	Southwest
St. John Fisher	Auburn Hills	Pontiac Area
St. John Neumann	Canton Twp.	Northwest Wayne
St. John the Baptist *	Dearborn Heights	West Wayne
St. John the Baptist	Monroe	Monroe
St. John the Evangelist	Allenton	Thumb
St. John Vianney	Shelby Twp.	North Macomb
St. Josaphat	Detroit	Renaissance
St. Joseph *	Dearborn	West Wayne
St. Joseph	Detroit	Renaissance
St. Joseph	Erie	Monroe
St. Joseph	Ida	Monroe
St. Joseph	Lake Orion	Pontiac Area
St. Joseph	Maybee	Monroe
St. Joseph	Monroe	Monroe
St. Joseph	Pontiac	Pontiac Area
St. Joseph	Port Huron	Blue Water
St. Joseph	South Lyon	Farmington-Southfield
St. Joseph *	Trenton	Downriver
St. Joseph *	Wyandotte	Downriver
St. Joseph Malankara Mission	Center Line	Genesis
St. Jude	Detroit	Renaissance
St. Justin	Hazel Park	Southeast Oakland
St. Kenneth	Plymouth	Northwest Wayne
St. Kieran	Shelby Twp.	North Macomb
St. Ladislaus *	Hamtramck	Genesis
St. Lawrence	Utica	North Macomb
St. Leo	Detroit	Renaissance
St. Leonard of Port Maurice *	Warren	Genesis
St. Linus	Dearborn Heights	West Wayne
<b>St. Louis</b>	<b>Clinton Twp.</b>	<b>Central Macomb</b>
St. Louis the King *	Detroit	Genesis
St. Louise (de Marillac) *	Warren	Genesis
St. Lucy	St. Clair Shores	SERF
St. Lucy (Croatian)	Troy	Southeast Oakland
St. Luke	Detroit	Trinity
St. Malachy	Sterling Heights	Central Macomb
St. Margaret of Scotland	St. Clair Shores	SERF
St. Mark	Harsens Island	Blue Water
St. Mark	Warren	Genesis
St. Martha *	Dearborn	West Wayne
St. Martin de Porres	Warren	Genesis
St. Mary	Detroit	Renaissance
St. Mary of the Snows	Milford Twp.	Lakes
St. Mary	Monroe	Monroe
St. Mary	Port Huron	Blue Water
St. Mary	Rockwood	Monroe
St. Mary	Royal Oak	Southeast Oakland
St. Mary	St. Clair	Blue Water
St. Mary	Wayne	West Wayne

Parish	City	Vicariate
St. Mary Burnside	North Branch	Thumb
St. Mary Magdalen	Hazel Park	Southeast Oakland
St. Mary Magdalen	Melvindale	Downriver
St. Mary Mystical Rose	Armada	North Macomb
St. Mary of Redford	Detroit	Trinity
St. Mary of the Hills	Rochester Hills	Pontiac Area
St. Mary Queen of Creation	New Baltimore	Blue Water
St. Matthew	Detroit	Renaissance
St. Matthias	Sterling Heights	Central Macomb
<b>St. Maurice</b>	<b>Livonia</b>	<b>Northwest Wayne</b>
St. Maximilian Kolbe	Macomb Twp.	North Macomb
St. Mel *	Dearborn Heights	West Wayne
St. Michael	Livonia	Northwest Wayne
St. Michael	Monroe	Monroe
St. Michael	Pontiac	Pontiac Area
<b>St. Michael</b>	<b>Southfield</b>	<b>Farmington-Southfield</b>
St. Michael	Sterling Heights	Central Macomb
St. Nicholas	Capac	Thumb
St. Owen	Bloomfield Hills	Birmingham-Bloomfield-Troy
St. Paschal Baylon *	Taylor	Downriver
St. Patrick	Carleton	Monroe
St. Patrick	Detroit	Renaissance
St. Patrick	White Lake Twp.	Lakes
St. Patrick *	Wyandotte	Downriver
St. Patrick Mission	North Branch	Thumb
St. Paul on the Lake	Grosse Pte. Farms	Renaissance
St. Paul (Albanian)	Rochester Hills	Pontiac Area
St. Paul of Tarsus	Clinton Twp.	Central Macomb
St. Perpetua	Waterford Twp.	Lakes
St. Peter	Mt. Clemens	Central Macomb
St. Peter Claver	Detroit	Trinity
<b>St. Peter the Apostle</b>	<b>Harper Woods</b>	<b>SERF</b>
St. Philip Neri	Columbus	Blue Water
St. Philomena	Detroit	Renaissance
St. Pius X *	Southgate	Downriver
St. Priscilla	Livonia	Northwest Wayne
St. Raphael *	Garden City	Northwest Wayne
St. Raymond *	Detroit	Genesis
St. Regis	Bloomfield Hills	Birmingham-Bloomfield-Troy
St. Rene Goupil	Sterling Heights	Central Macomb
St. Richard *	Westland	West Wayne
St. Rita	Detroit	Trinity
St. Rita	Holly	Lakes
St. Robert Bellarmine	Redford Twp.	Northwest Wayne
St. Roch *	Flat Rock	Downriver
St. Ronald	Clinton Twp.	Central Macomb
St. Sabina *	Dearborn Heights	West Wayne
St. Scholastica	Detroit	Trinity
St. Sebastian	Dearborn	West Wayne
St. Stanislaus Kostka *	Wyandotte	Downriver
St. Stephen	New Boston	West Wayne
St. Stephen	Port Huron	Blue Water
St. Stephen/Mary Mother of the Church	Detroit	Southwest
St. Suzanne/Our Lady Gate of Heaven	Detroit	Trinity
St. Sylvester	Warren	Genesis
<b>St. Thecla</b>	<b>Clinton Twp.</b>	<b>Central Macomb</b>
St. Theodore of Canterbury *	Westland	Northwest Wayne
St. Therese of Lisieux	Shelby Twp.	North Macomb
St. Thomas a'Becket	Canton Twp.	Northwest Wayne
St. Thomas Aquinas	Detroit	Trinity
St. Thomas More	Troy	Birmingham-Bloomfield-Troy
St. Timothy *	Trenton	Downriver
St. Valentine	Redford Twp.	Northwest Wayne
<b>St. Valerie of Ravenna</b>	<b>Clinton Twp.</b>	<b>Central Macomb</b>
St. Veronica *	Eastpointe	SERF
St. Victor *	Gibraltar	Downriver
St. Vincent de Paul	Pontiac	Pontiac Area
St. Vincent Ferrer	Madison Heights	Southeast Oakland
St. William	Walled Lake	Lakes
Sweetest Heart of Mary Transfiguration *	Detroit	Renaissance
	Detroit	Genesis

Key:  Closing  Merging  Clustering

\* By December 2006, these parishes will submit cluster plans, and begin planning for implementation upon the retirement, reassignment or illness of the current pastor. \*\* Will merge or close.

## Archdiocesan School Projection



### Catholic School Enrollment Trends

Source: Department of Education

Note: The declines in student enrollment have paralleled the demographic changes impacting parishes (see Page 8). Although 47,000 need-based scholarship grants have been awarded during the past decade to Catholic and non-Catholic students in Archdiocesan schools, the cost of tuition is consistently listed as the No. 1 reason why families cannot afford parish-based education.

#### In June 2006

Of the 118 schools in the Archdiocese of Detroit, the following three have requested and received permission to close:

- St. Anthony Academy, Belleville, West Wayne Vicariate (K-8 = 121 students)
- St. Bede, Southfield, Farmington-Southfield Vicariate (K-8 = 156 students)
- Taylor Catholic, Taylor, Downriver Vicariate (K-8=167 students)

#### By December 2006

The following vicariates are to submit long-range plans for their schools to the Department of Education:

- Blue Water
- Downriver
- Genesis
- Northwest Wayne
- Southeast Oakland
- Trinity
- West Wayne

The following vicariates are to develop plans for the financial support of their schools:

- Blue Water
- Central Macomb
- Downriver
- Monroe
- Renaissance
- Southwest

#### Current and ongoing plans

- Collaboration among schools within the Farmington-Southfield Vicariate and Lakes Vicariate.
- Monroe Vicariate will monitor the status of St. Patrick School, Carleton, and St. Joseph School, Erie.
- North Macomb Vicariate is focusing its efforts on a new high school.
- Pontiac Area Vicariate affirms its support of Catholic school education.
- In the Renaissance Vicariate, 60 percent of the pastors have signed Articles of Agreement to support Eastside Vicariate Elementary School. (Support is defined as having a role in governance, oversight of its Catholicity, liturgical and sacramental responsibilities, and financial contributions.)
- SERF Vicariate has developed a new model to evaluate school strength and to establish a vicariate school board.

# Archdiocesan Schools

School	City	Vicariate	School	City	Vicariate
Academy of the Sacred Heart PK-12	Bloomfield Hills	Birmingham-Bloomfield-Troy	St. Germaine	St. Clair Shores	SERF
All Saints	Canton Twp.	Northwest Wayne	St. Hugo of the Hills	Bloomfield Hills	Birmingham-Bloomfield-Troy
Bishop Foley H.S.	Madison Heights	Southeast Oakland	St. Isaac Jogues	St. Clair Shores	SERF Vicariate
Bishop Kelley	Lapeer	Thumb	St. Joan of Arc	St. Clair Shores	SERF Vicariate
Brother Rice H.S.	Bloomfield Hills	Birmingham-Bloomfield-Troy	St. John the Baptist	Monroe	Monroe
Cabrini K-12	Allen Park	Downriver	St. Joseph	Erie	Monroe
Cardinal Mooney H.S.	Marine City	Blue Water	St. Joseph	Trenton	Downriver
Catholic Central H.S.	Novi	Farmington-Southfield	St. Joseph School	Lake Orion	Pontiac Area
Christ the Good Shepherd	Lincoln Park	Downriver	St. Lawrence	Utica	North Macomb
Christ the King Elementary	Detroit	Trinity	St. Linus	Dearborn Heights	West Wayne
De La Salle H.S.	Warren	Genesis	St. Mary	Monroe	Monroe
Divine Child 1-12	Dearborn	West Wayne	St. Mary	Mt. Clemens	Central Macomb
East Catholic	Detroit	Renaissance	St. Mary	Rockwood	Monroe
Everest Academy	Clarkston	Lakes	St. Mary	Royal Oak	Southeast Oakland
Gabriel Richard H.S.	Riverview	Downriver	St. Mary	St. Clair	West Wayne
Gesu	Detroit	Trinity	St. Mary	Wayne	Blue Water
Guardian Angels Schools	Clawson	Southeast Oakland	St. Mary Academy	Port Huron	Monroe
Holy Cross	Marine City	Blue Water	St. Mary Catholic Central H.S.	Monroe	Southeast Oakland
Holy Family Regional School	Rochester Hills	Pontiac Area	St. Mary Magdalen	Hazel Park	Trinity
Holy Name	Birmingham	Birmingham-Bloomfield-Troy	St. Mary of Redford	Detroit	Lakes
Holy Redeemer	Detroit	Southwest	St. Mary's Prep. H.S.	Orchard Lake	Blue Water
Immaculate Conception	Fair Haven	Blue Water	St. Michael	Livonia	Northwest Wayne
Immaculate Conception	Warren	Genesis	St. Michael the Archangel	Monroe	Monroe
Ukranian K-12			St. Patrick	Carleton	Monroe
Kensington Academy	Beverly Hills	Birmingham-Bloomfield-Troy	St. Patrick	White Lake Twp.	Lakes
Ladywood H.S.	Livonia	Northwest Wayne	St. Paul on the Lake	Grosse Pte. Farms	Renaissance
Loyola H.S.	Detroit	Trinity	St. Pius X	Southgate	Downriver
Marian H.S.	Bloomfield Hills	Birmingham-Bloomfield-Troy	St. Raphael	Garden City	Northwest Wayne
Marist Academy	(Both Campuses)	Pontiac Area	St. Regis	Bloomfield Hills	Birmingham-Bloomfield-Troy
McCormick Catholic Academy	Port Huron	Blue Water	St. Robert Bellarmine	Redford Twp.	Northwest Wayne
Mercy H.S.	Farmington Hills	Farmington-Southfield	St. Sabina	Dearborn Heights	West Wayne
Most Holy Trinity	Detroit	Southwest	St. Scholastica	Detroit	Trinity
Notre Dame Prep. H.S.	Pontiac	Pontiac Area	St. Sebastian	Dearborn Heights	West Wayne
Our Lady of Good Counsel	Plymouth	Northwest Wayne	St. Stanislaus Kostka	Wyandotte	Downriver
Our Lady of Guadalupe Middle School	Detroit	Southwest	St. Stephen	New Boston	West Wayne
Our Lady of La Salette	Berkley	Southeast Oakland	St. Thecla	Clinton Twp.	Central Macomb
Our Lady of Loretto	Redford Twp.	Northwest Wayne	St. Valentine	Redford Twp.	Northwest Wayne
Our Lady of Mt. Carmel K-12	Wyandotte	Downriver	St. William	Walled Lake	Lakes
Our Lady of Refuge	Orchard Lake	Lakes	<b>Taylor Catholic</b>	<b>Taylor</b>	<b>Downriver</b>
Our Lady of Sorrows	Farmington	Farmington-Southfield	University of Detroit Jesuit 7-12	Detroit	Trinity
Our Lady of the Lakes Parish Schools PK-12	Waterford Twp.	Lakes	Wyandotte Catholic Consolidated	Wyandotte	Downriver
Our Lady of Victory	Northville	Northwest Wayne			
Our Lady Queen of Martyrs	Beverly Hills	Birmingham-Bloomfield-Troy			
Our Lady Star of the Sea	Grosse Pte. Wds.	Renaissance			
Regina H.S.	Harper Woods	SERF			
Sacred Heart School	Dearborn	West Wayne			
Shrine Catholic PK-12	Royal Oak	Southeast Oakland			
St. Albert the Great	Dearborn Heights	West Wayne			
St. Alfred	Taylor	Downriver			
St. Angela	Roseville	SERF			
St. Anne	Warren	Genesis			
St. Anselm	Dearborn Heights	West Wayne			
St. Anthony	Temperance	Monroe			
<b>St. Anthony Academy</b>	<b>Belleville</b>	<b>West Wayne</b>			
St. Augustine	Richmond	Blue Water			
St. Bartholomew	Detroit	Genesis			
<b>St. Bede</b>	<b>Southfield</b>	<b>Farmington-Southfield</b>			
St. Cecilia	Detroit	Trinity			
St. Charles	Newport	Monroe			
St. Clare of Montefalco	Grosse Pte. Park	Renaissance			
St. Clement	Center Line	Genesis			
St. Cyprrian	Riverview	Downriver			
St. Damian	Westland	Northwest Wayne			
St. Dennis	Royal Oak	Southeast Oakland			
St. Dunstan School	Garden City	West Wayne			
St. Edith	Livonia	Northwest Wayne			
St. Edward on the Lake	Lakeport	Blue Water			
St. Fabian	Farmington Hills	Farmington-Southfield			
St. Genevieve	Livonia	Northwest Wayne			

Key:   Schools that requested and received permission to close.



## The work continues

The Tracking Committee will monitor the compliance of parishes and vicariates with the recommendations of the *Together in Faith* process. At the same time, they will review and consider the recommendations of the *Total Pastoral Plan for Priests*, and work to bring both plans into one integrated approach for implementation.

### Members of the Committee:

**Bishop Francis Reiss**, was Cardinal Maida's delegate to the Coordinating Committee;

**Edward J. (Chip) Miller**, chairman, was chairman of the Coordinating Committee, St. Paul on the Lake Parish, Grosse Pointe Farms;

**Sr. Maureen Fay, OP**, was a member of the Coordinating Committee, St. Gerard Parish, Detroit;

**Fr. William Tindall**, pastor of St. Michael the Archangel Parish, Livonia, Presbyteral Council member;

**Fr. Sean Sylvester**, pastor of St. Michael Parish, Pontiac, Presbyteral Council member;

**Deacon Donald E. Sandstrom**, pastoral associate at Our Lady of Good Counsel Parish, Detroit;

**Fr. Jerome A. Brzezinski**, pastor of St. John Fisher Parish, Auburn Hills, Council of Vicars member;

**Fr. William Sinatra**, pastor of St. Ives Parish, Southfield, Council of Vicars member;

**Fr. Edward F. Zaorski**, pastor of SS. Andrew & Benedict Parish, Detroit, Council of Vicars member;

**Bernyce Edwards**, Archdiocesan Pastoral Council member, Annunciation/Our Lady of Sorrows Parish, Detroit;

**Robert McBrayer**, Archdiocesan Pastoral Council member, St. Patrick Parish, Wyandotte;

**Julia Guzman**, Archdiocesan Allocations Committee, St. Gabriel Detroit; and

**Terrence E. Keating**, Archdiocesan Advisory Board of Catholic Education, St. Hugo of the Hills Parish, Bloomfield Hills.

## THEMES

**T**hrough the Vicariate Pastoral Planning process over the past decade, preceding *Together in Faith*, several major themes have emerged as priorities for our Church. The *Total Pastoral Plan for Priests* articulated these same priorities and concerns.

The first of these themes is our call to be **'mission-minded.'** Throughout his 26-year papacy, Pope John Paul II repeatedly called all believers to be heralds of the 'new evangelization,' that is, a renewed *hearing* of the Gospel, believing it in our hearts and proclaiming it in our lives. Such 'mission-mindedness' flows from our baptism and confirmation when we were consecrated according to the likeness of Christ our priest, prophet, and shepherd-ruler. Each time we celebrate the Holy Eucharist, we are reminded of our vocation to reach out beyond ourselves, to express our connectedness as one Church, whether we live in urban, suburban, or rural areas. Further, we are sent forth from the Eucharist to be salt and leaven transforming our whole society, bringing Christian values to the realms of politics and business.

In addition to having a mission or purpose, we also need to be leaders. Very rarely is

anyone born a leader; leadership usually emerges according to needs and as people develop their talents and skills. To this end, our second priority underscores the vital importance of **developing leaders** for the current and future needs of the Church. As a Catholic community, we need to identify, train, and encourage men and women for roles of active leadership in all aspects of Church life. Obviously, leadership formation includes fostering vocations to the priesthood, permanent diaconate, and religious life; it also means strengthening the vocations of lay men and women as lay ecclesial ministers in their parishes.

Finally, because we are a worldwide Church and a 'global village,' we can never think of ourselves in isolation from our brothers and sisters near or far. Our third priority, therefore, highlights proper living as disciples through **Christian stewardship**—including sharing our gifts of time, talent, and treasure for the good of all.

These three priorities present the foundation stones for the next phase of our journey."

— From *The Journey Before Us*



## Resources

The Archdiocese will provide ongoing reports on the implementation of *Together in Faith* in its weekly newspaper, *The Michigan Catholic*, on its Web site,

[www.AODonline.org](http://www.AODonline.org), and on the Catholic Television Network of Detroit (CTND).

Additional information is available any time via e-mail to [TogetherInFaith@aod.org](mailto:TogetherInFaith@aod.org) or by calling (313) 237-5971.

# Priorities as the journey continues ...

Cardinal Maida's Pastoral Letter, *The Journey Before Us*, expands on three priorities—being Mission-Minded, Developing Leaders, and Christian Stewardship.

He writes, "These (points) all need to be further developed in your respective parishes and vicariates. I

endorse the priorities highlighted through the planning process and I ask you to implement them on the parish and vicariate level."

The following excerpts are among the themes highlighted in his letter.

## Mission-Minded

- **Youth ministry** ... our highest priority requires diverse approaches given the needs of urban, rural, and suburban youth, as well as multiple ethnic groups.
- **"New Evangelization"** ... that includes concrete ways for attracting new members to know Jesus as Lord through the Church.
- **Catechetical formation** ... for people of all ages.
- **Faithful to our worship traditions** ... especially in the celebration of the Holy Eucharist and sacraments.
- **Financial support of schools** ... addressing the responsibility within the vicariate/region.
- **Young adult and campus ministry** ... a new model has already begun.
- **Hispanic Pastoral Plan** ... needs to be integrated into each vicariate plan.
- **Family life ministry** ... support groups need to be sustained.
- **Ethnic communities** ... identify the needs of emerging groups on a regular basis.
- **Seniors** ... take better account of their valuable gifts to the Church.
- **Justice and peace** ... action and advocacy on local, national, and international concerns, especially as they impact on the dignity of human life.

## Developing Leaders

- **Ongoing theological and pastoral formation for priests** ... continuing study and formation, strengthening skills in management.
- **Business managers in parishes** ... to be employed wherever possible.
- **Pastoral ministry formation** ... renewed commitment to certification programs at Sacred Heart Major Seminary.
- **Fostering a culture of vocations** ... needs to be a theme in our parishes and schools.
- **Permanent deacons** ... greater affirmation on every level.

## Christian Stewardship

- **Stewardship formation** ... living as disciples through stewardship and encouraging the gifts of time, talent, and treasure.
- **Parish stewardship commissions** ... keeping fellow parishioners informed of the general financial condition of their parish or school.
- **Resource sharing** ... within the parish and also beyond the parish.
- **Our future Church** ... in some areas, a focus on creating new parishes and/or schools; in other areas, planning for declining populations and resources.





## JOURNEY PRAYER

Heavenly Father, we give you thanks for the presence of Christ your Son and the inspiration of your Holy Spirit in the work of *Together in Faith* as we have planned together for the future of our parishes and schools. We ask you, Lord, to guide us as we now begin the next stage of our journey, the implementation of our plans. Help us be open to the way you call us to change and grow through a greater sharing of our gifts and resources for the good of all. In a special way, Lord, we pray with and for all faith communities that will be experiencing some letting go and transformation; may they experience your consoling peace and our loving support. Through this journey, Lord, may our Church be renewed and strengthened as we share and celebrate the many gifts of your love. We pray through Christ your Son, who lives and reigns with you and the Holy Spirit, one God forever and ever. Amen.