

A grayscale photograph of a church steeple against a cloudy sky. The steeple is on the right side of the image, with a cross on top. The sky is filled with soft, textured clouds. The overall tone is serene and contemplative.

Archdiocese of Detroit New Organization Charts

September 3, 2009

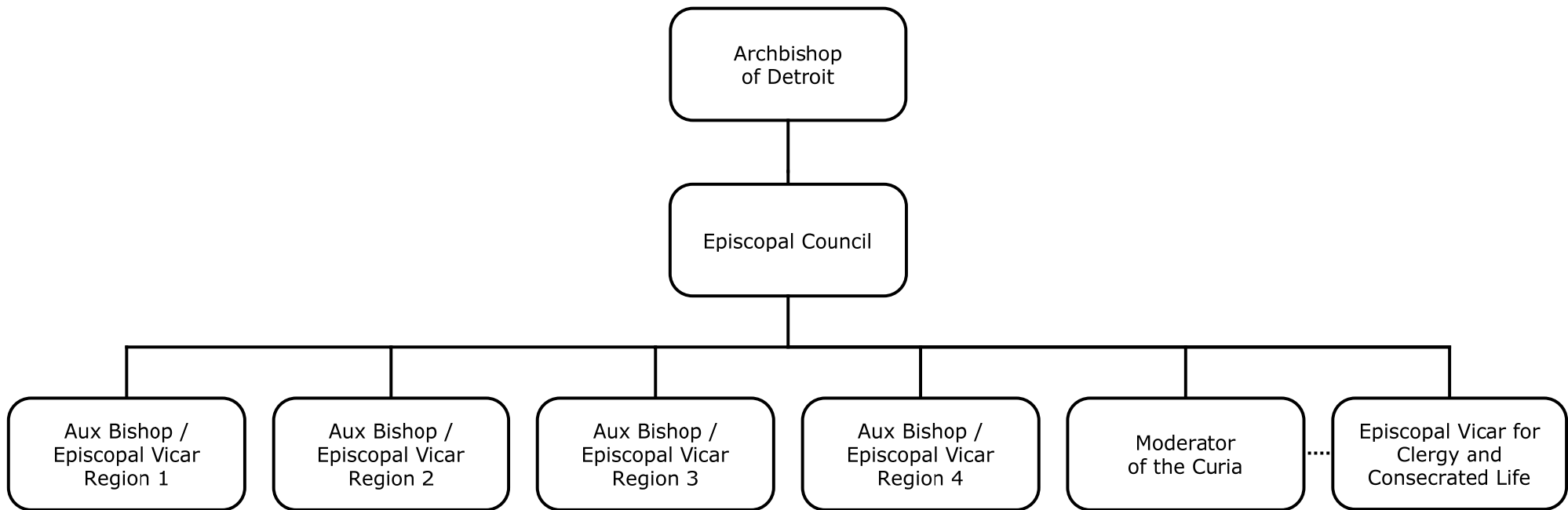
to share

Christ

in and through

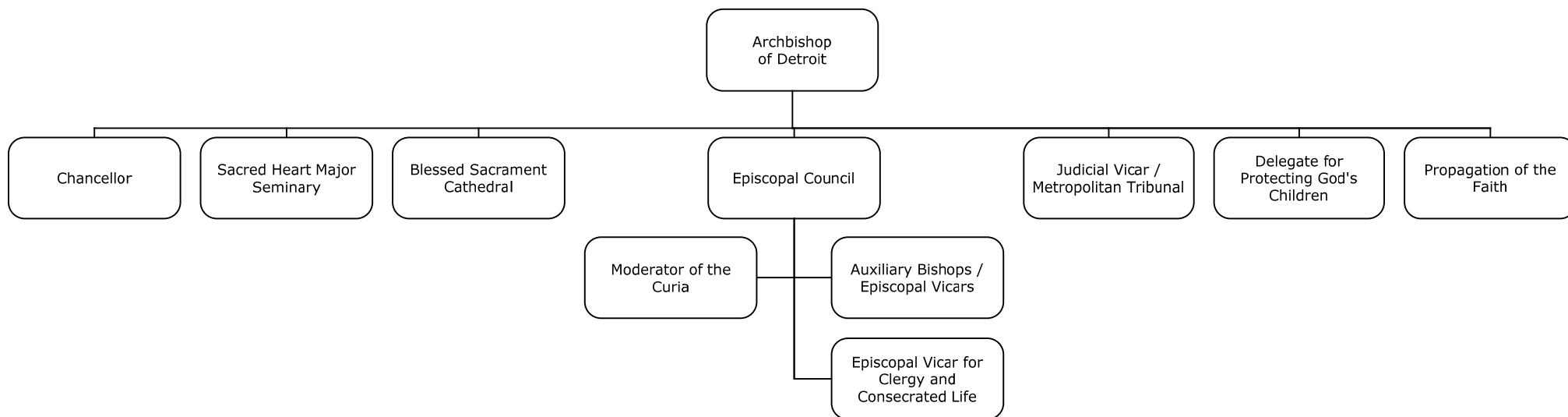
the Church

Episcopal Council

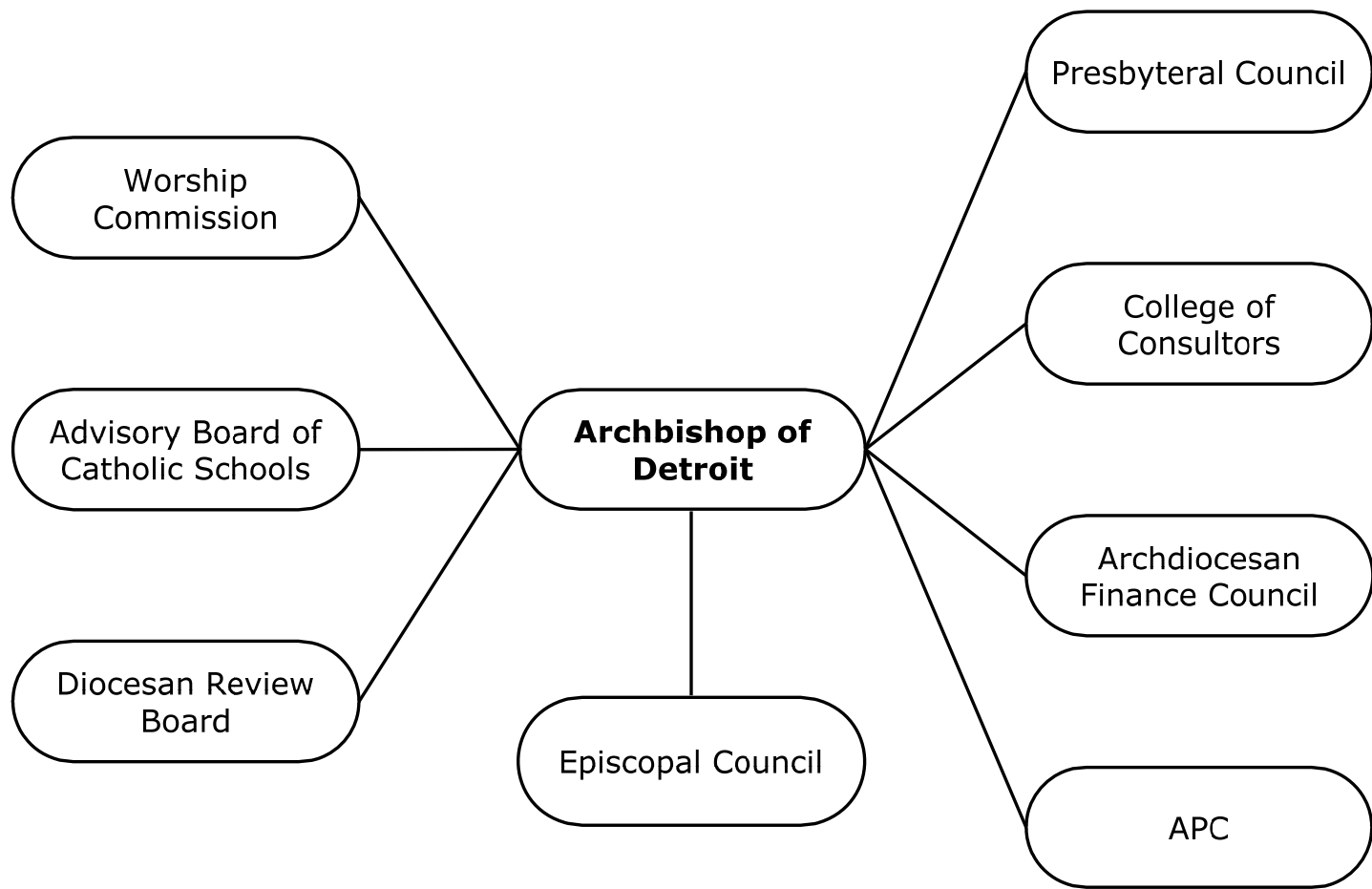


Archbishop of Detroit's Direct Reports

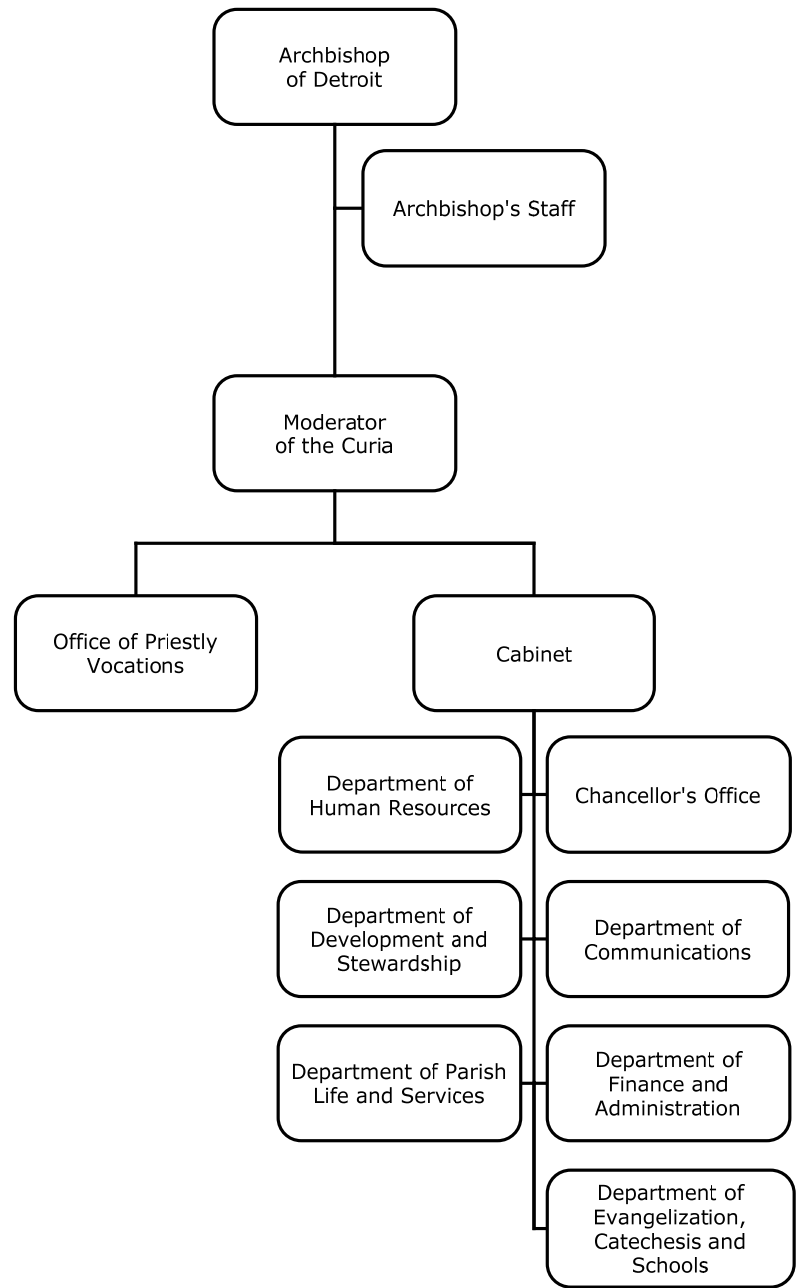
Please Note: While there are direct lines to the Archbishop for the Judicial Vicar/Metropolitan Tribunal, the Chancellor's Office and the Delegate for Protecting God's Children, all budgeting and HR related matters for these offices are the competency of the Moderator of the Curia.



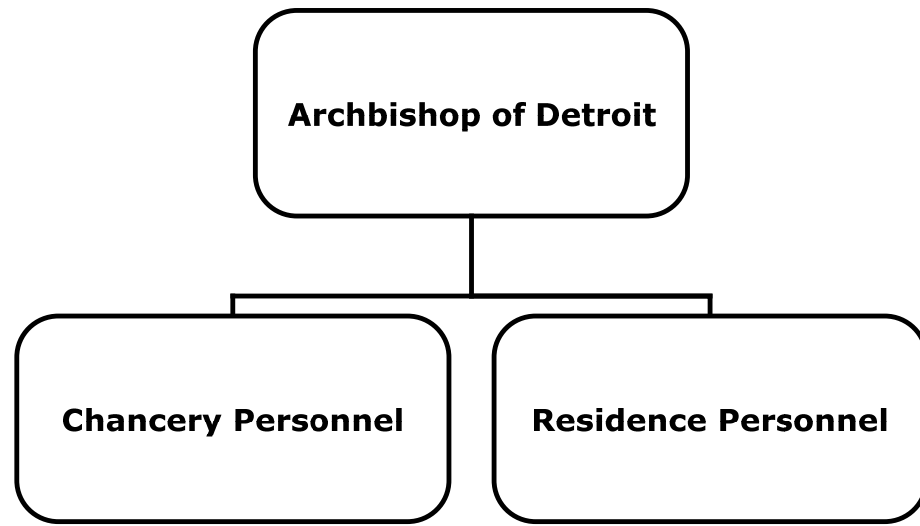
Consultative Bodies to the Archbishop



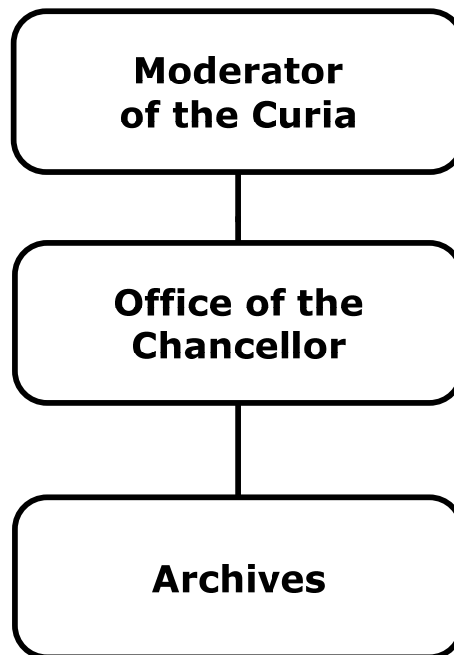
Cabinet Structure



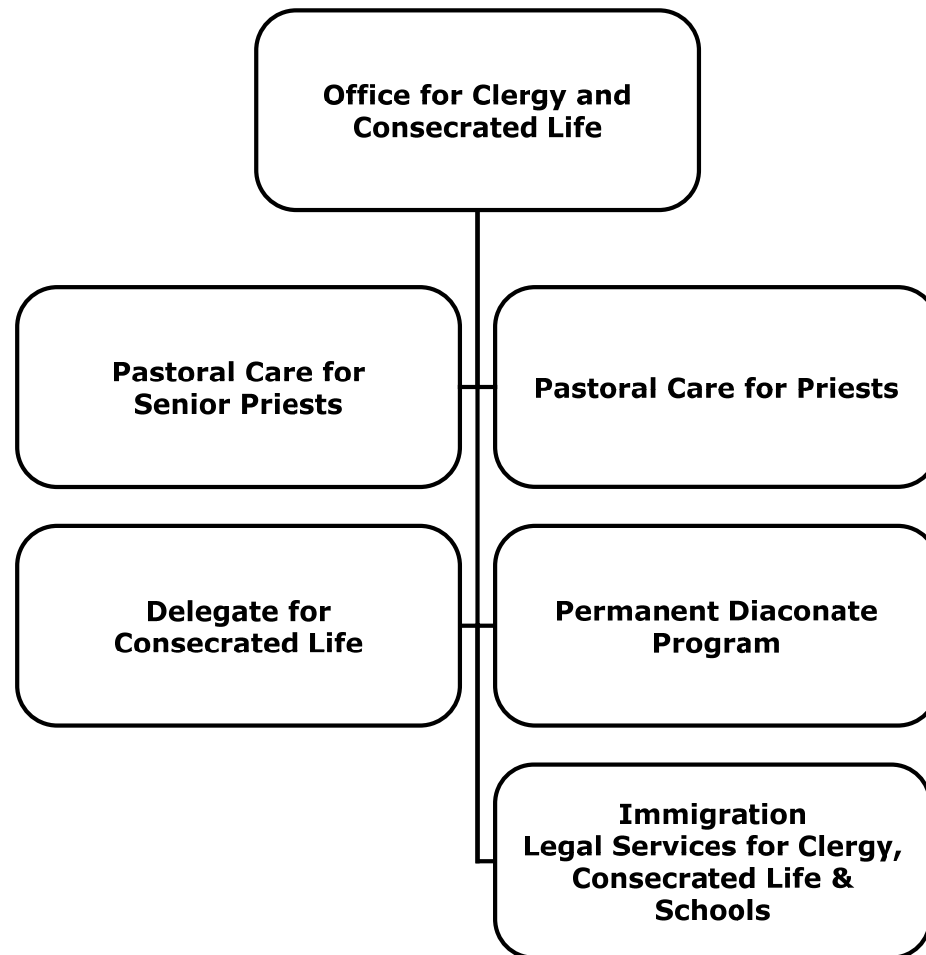
Archbishop's Office and Staff

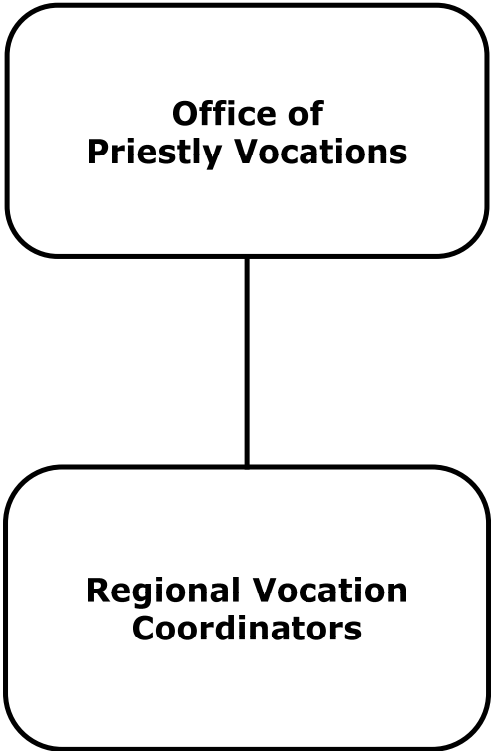


Moderator of the Curia and Chancellor's Offices

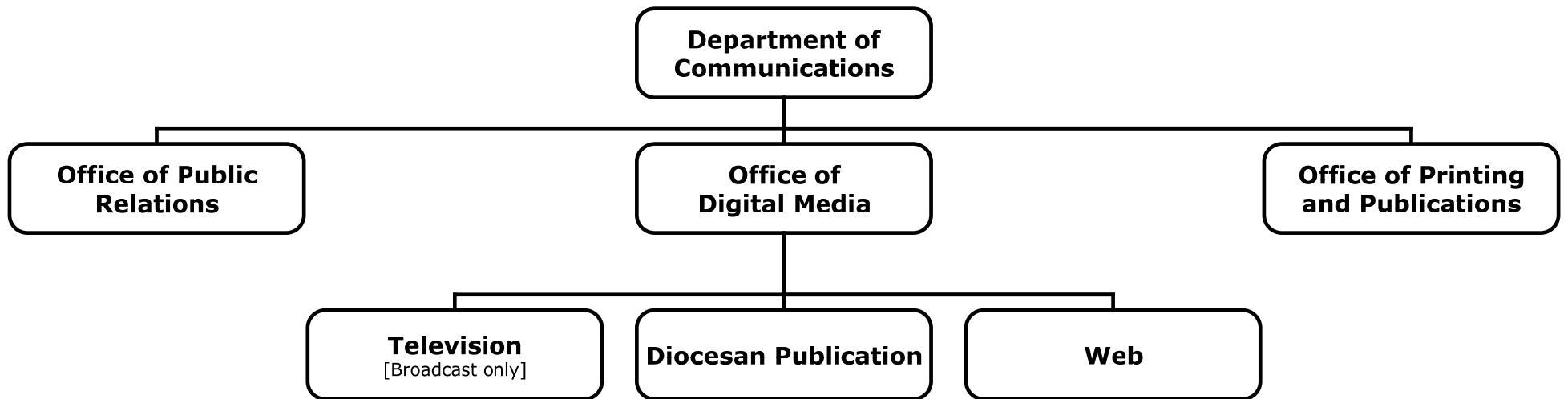


Office for Clergy and Consecrated Life

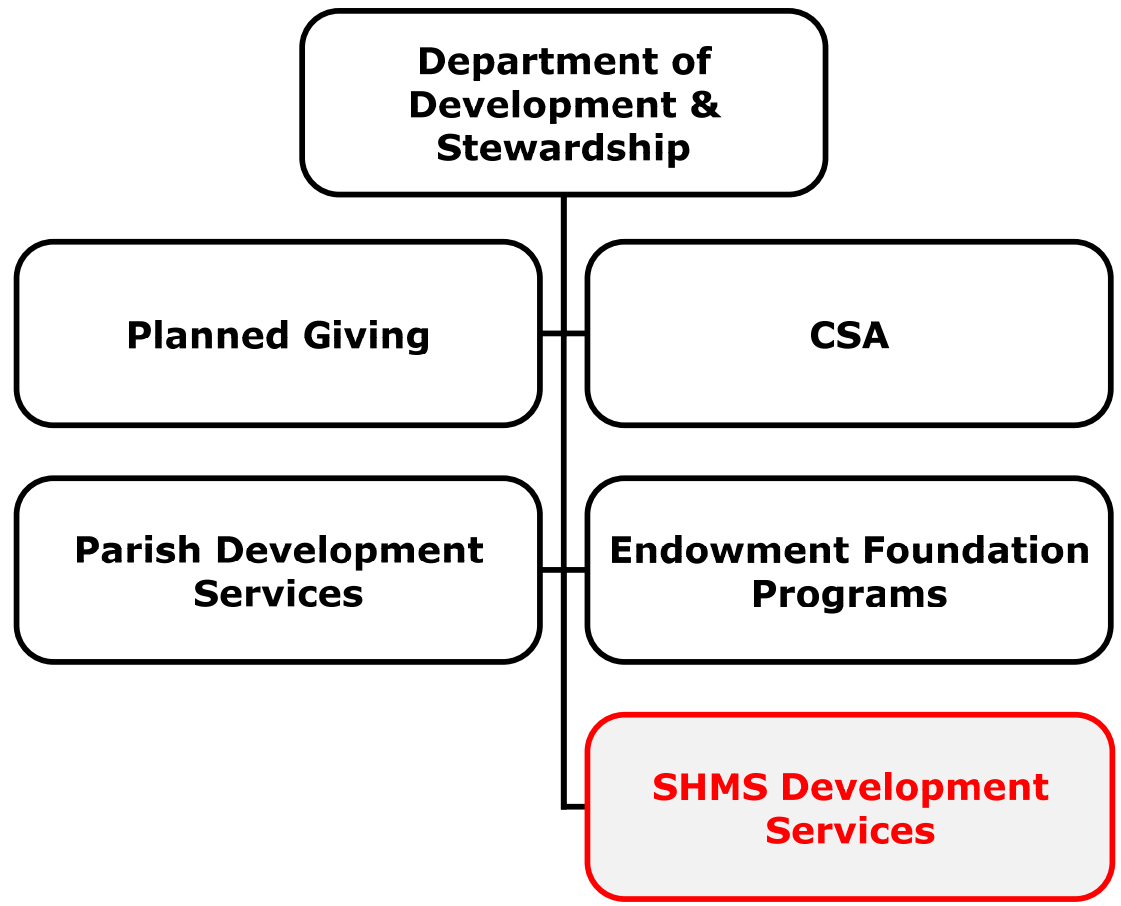




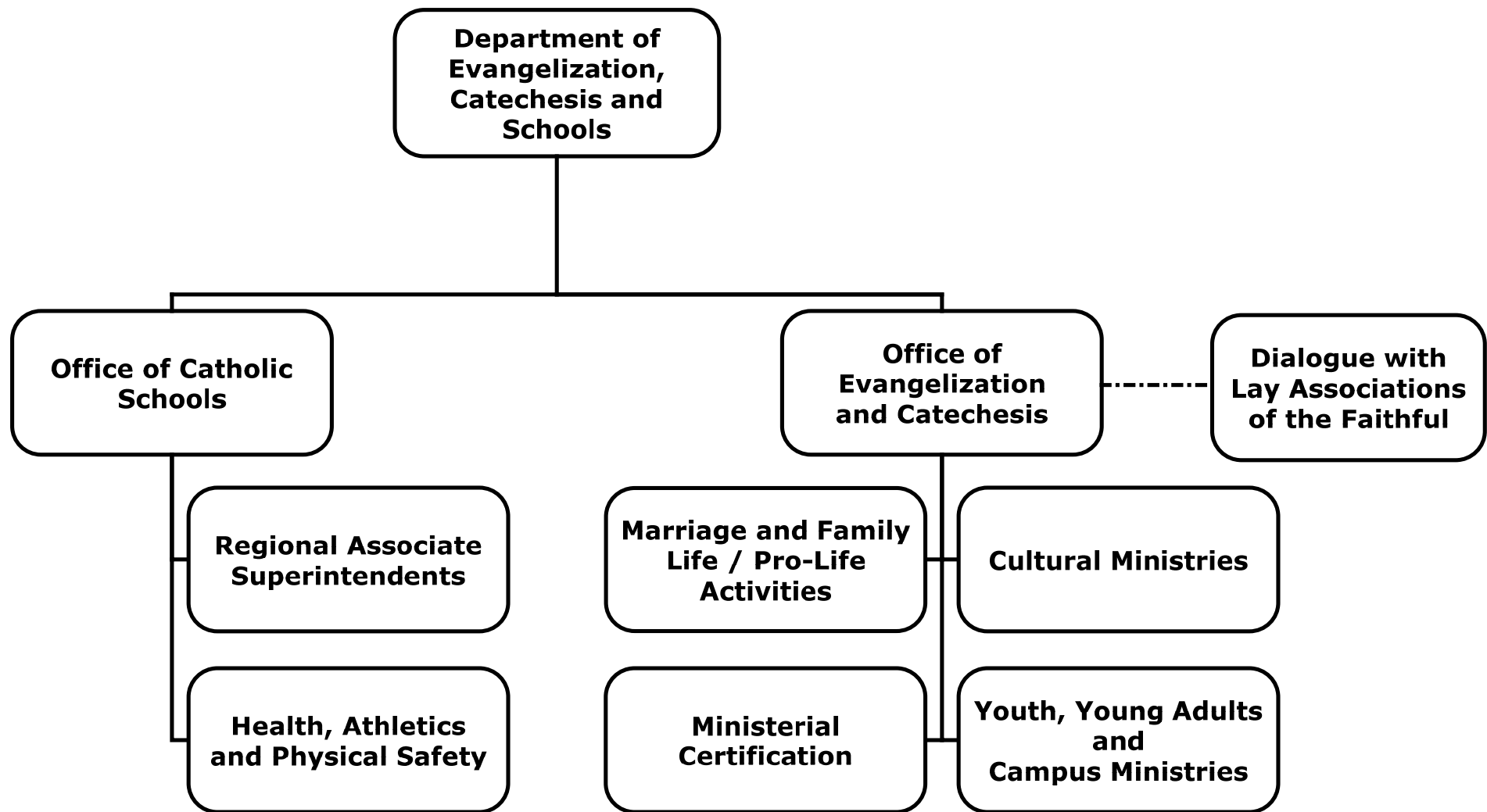
Department of Communications



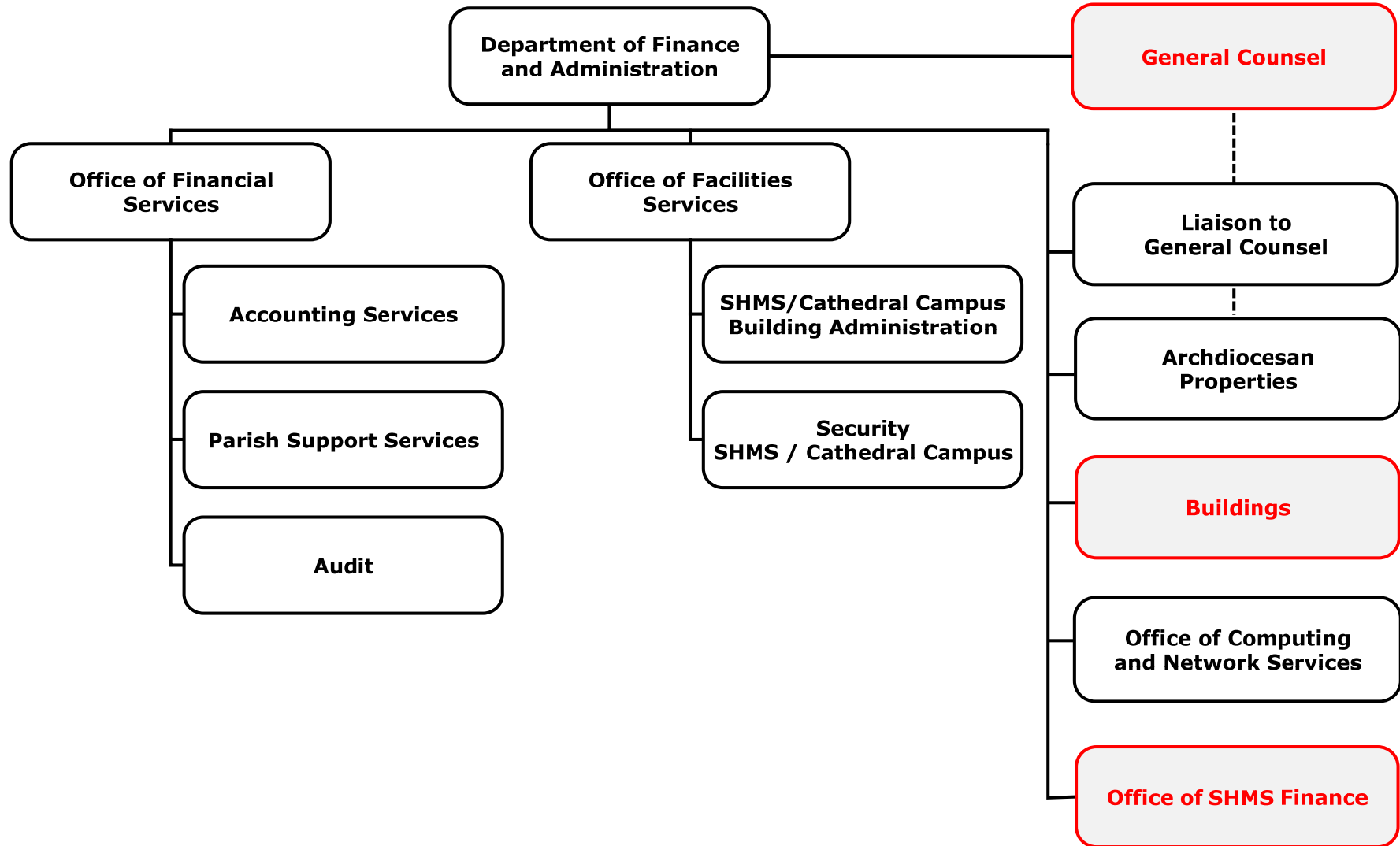
Department of Development and Stewardship



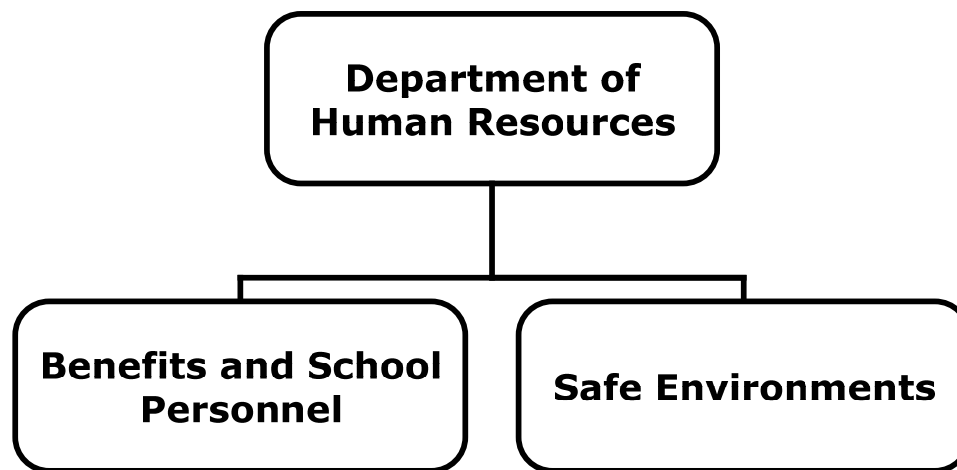
Department of Evangelization, Catechesis and Schools



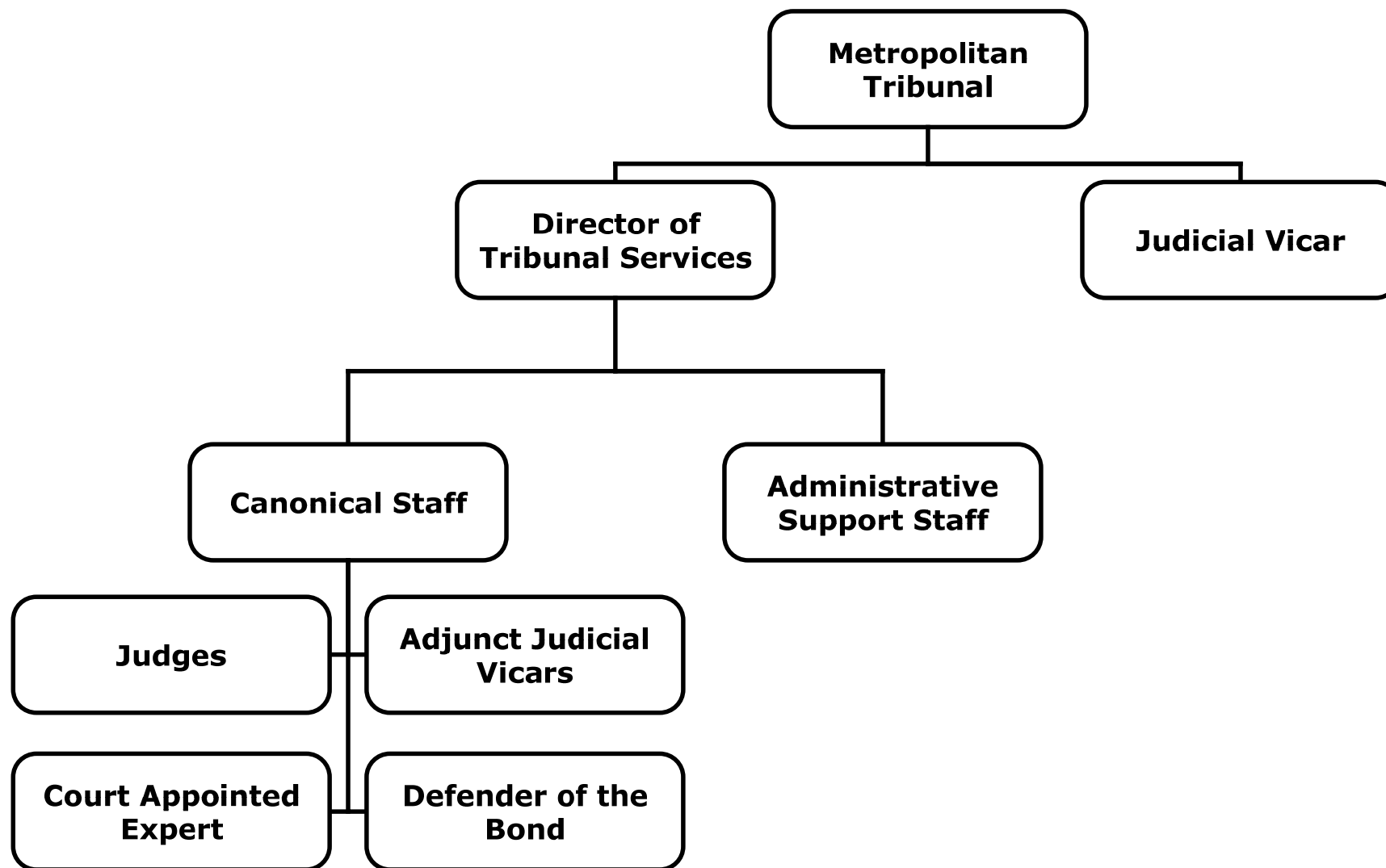
Department of Finance and Administration



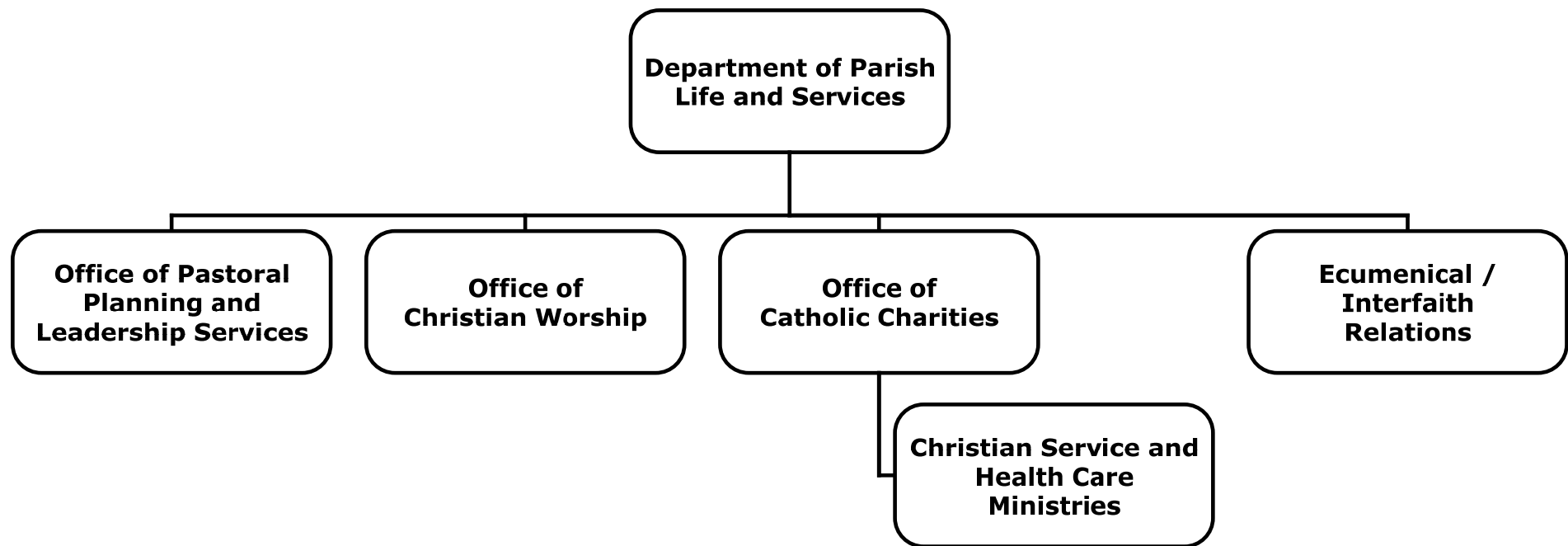
Department of Human Resources

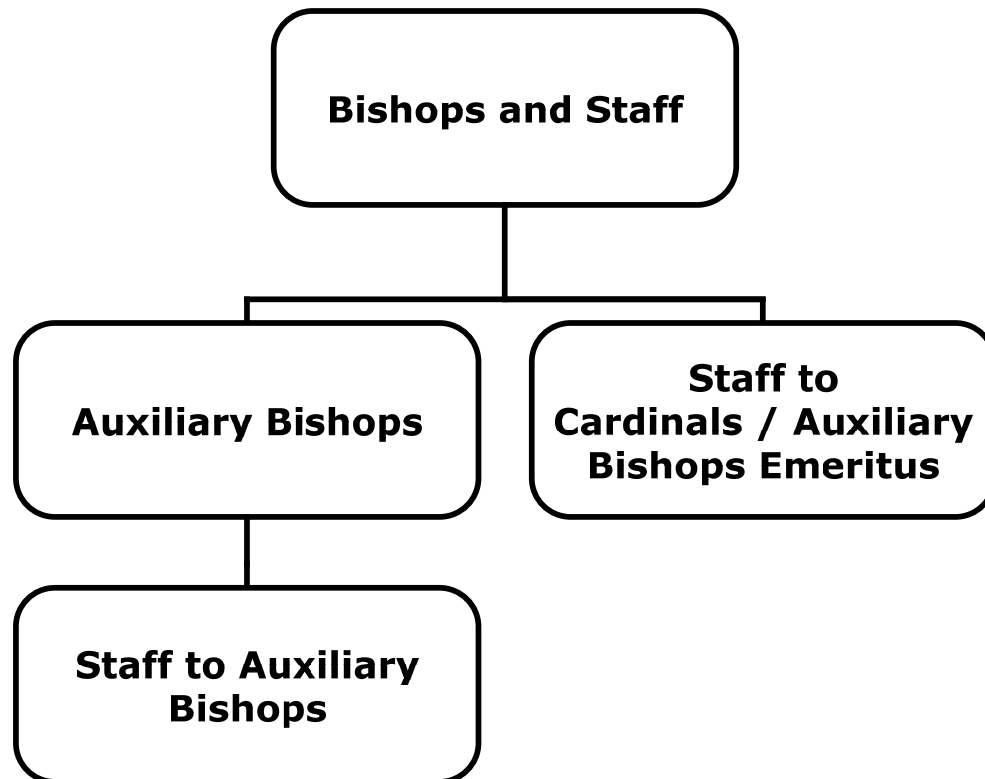


Metropolitan Tribunal



Department of Parish Life and Services





Delegate for Protecting God's Children:

**Delegate for
Protecting God's
Children**